

THIS INSTRUMENT PREPARED BY
DAVID P. LINDLEY
OF
CAULFIELD and WHEELER, INC.
SURVEYORS - ENGINEERS - PLANNERS
7900 GLADES ROAD, SUITE 100
BOCA RATON, FLORIDA 33434 - (561)392-1991

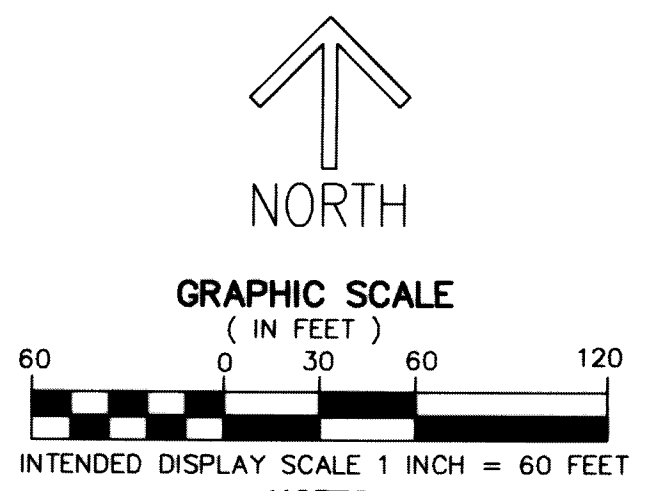
PALM BEACH PARK OF COMMERCE, P.I.P.D. - PLAT 25

BEING A PORTION OF SECTIONS 18 AND 19, TOWNSHIP 41 SOUTH, RANGE 41 EAST,
PALM BEACH COUNTY, FLORIDA.

MATCH LINE SHEET 4

LEGEND/ABBREVIATIONS

- ⊕ - CENTERLINE
- Δ - DELTA (CENTRAL ANGLE)
- CB - CHORD BEARING
- CD - CHORD DISTANCE
- E - EASTING (WHEN USED WITH COORDINATES)
- FDOT - FLORIDA DEPARTMENT OF TRANSPORTATION
- FPL - FLORIDA POWER & LIGHT COMPANY
- L - ARC LENGTH
- LB - LICENSED BUSINESS
- N - NORTHING (WHEN USED WITH COORDINATES)
- N.P.B.C.I.D. - NORTHERN PALM BEACH COUNTY IMPROVEMENT DISTRICT
- NPBCIDWME - NORTHERN PALM BEACH COUNTY IMPROVEMENT DISTRICT WATER MANAGEMENT EASEMENT
- NPBCIDWME - NORTHERN PALM BEACH COUNTY IMPROVEMENT DISTRICT WATER MANAGEMENT EASEMENT
- O.R.B. - OFFICIAL RECORD BOOK
- P.I.P.D. - PLANNED INDUSTRIAL PARK DEVELOPMENT
- PC - POINT OF CURVATURE
- PCC - POINT OF COMPOUND CURVATURE
- PNT - POINT OF NON-TANGENCY
- PRC - POINT OF REVERSE CURVATURE
- PT - POINT OF TANGENCY
- R - RADIUS
- PRM - DENOTES PERMANENT REFERENCE MONUMENT FOUND 4" x 4" x 24" CONCRETE MONUMENT WITH ALUMINUM DISK STAMPED "C&W PRM LB3591" UNLESS OTHERWISE NOTED
- △ - DENOTES HORIZONTAL CONTROL POINT

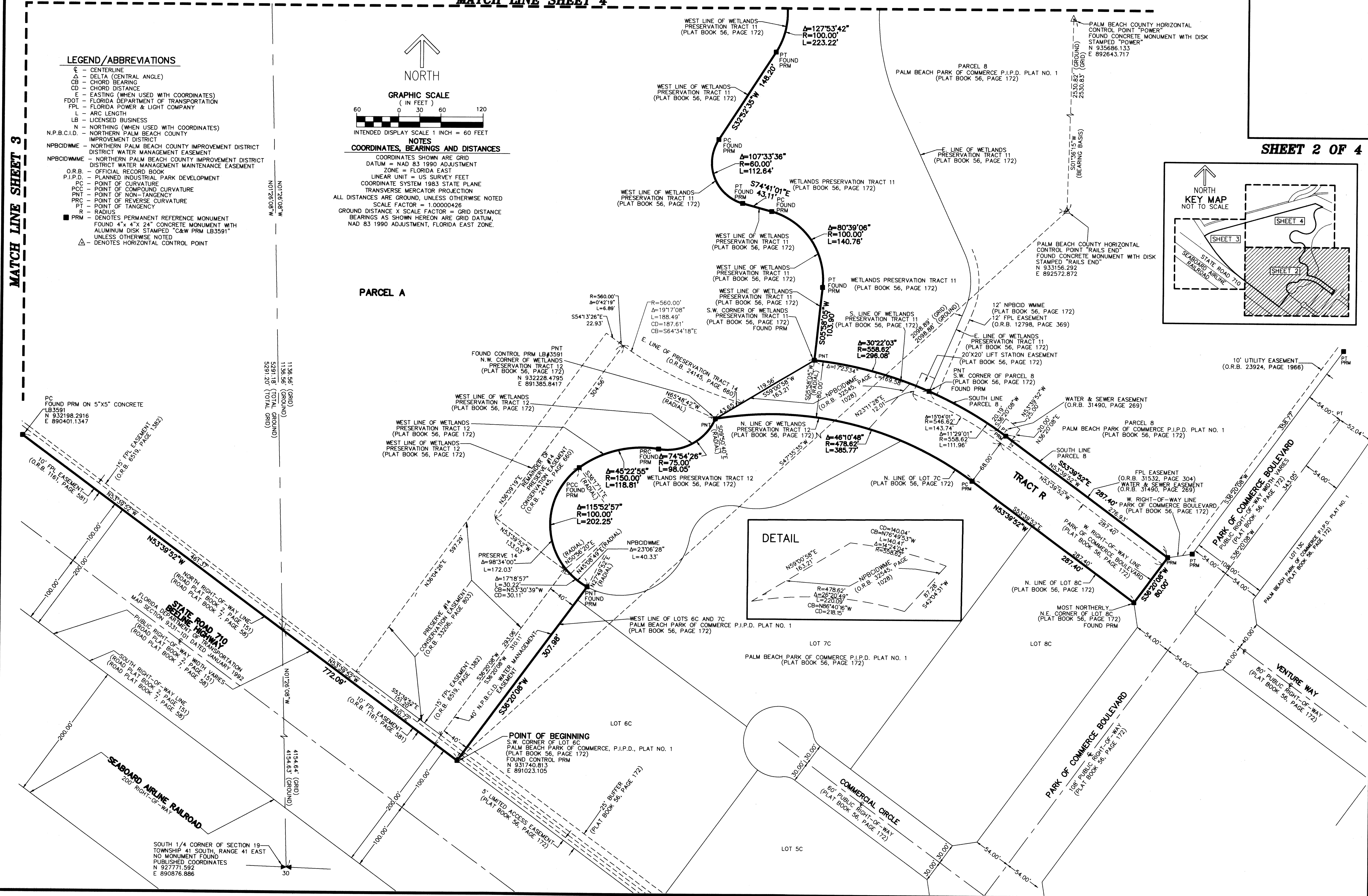


NOTES

COORDINATES, BEARINGS AND DISTANCES

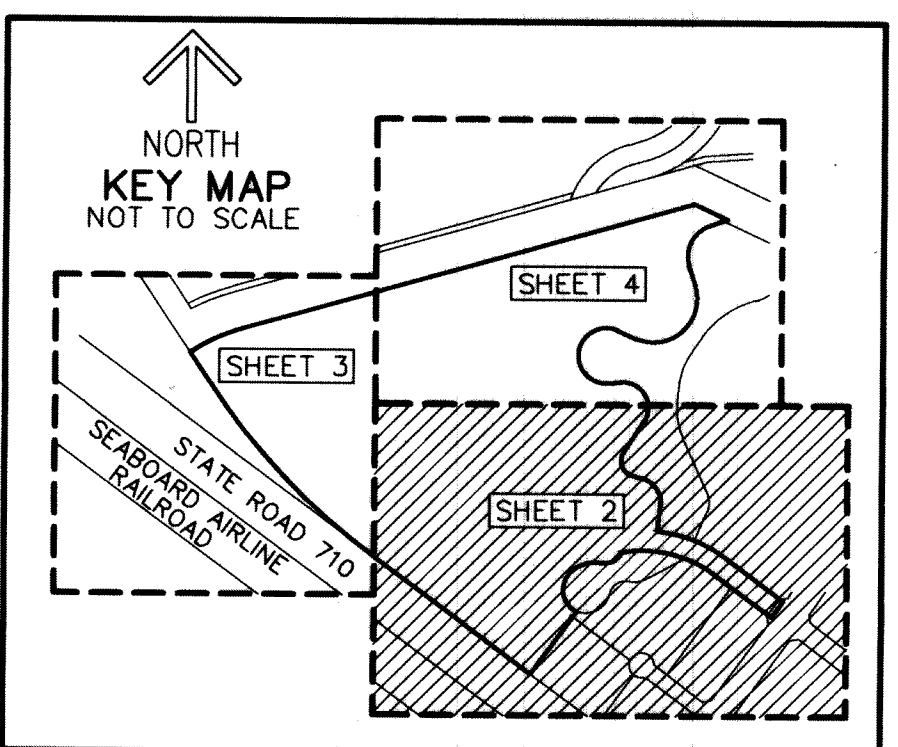
COORDINATES SHOWN ARE GRID
DATUM = NAD 83 1990 ADJUSTMENT
ZONE = FLORIDA EAST
LINEAR UNIT = US SURVEY FEET
COORDINATE SYSTEM 1983 STATE PLANE
TRANSVERSE MERCATOR PROJECTION
ALL DISTANCES ARE GROUND, UNLESS OTHERWISE NOTED
SCALE FACTOR = 1.00000426
GROUND DISTANCE X SCALE FACTOR = GRID DISTANCE
BEARINGS AS SHOWN HEREON ARE GRID DATUM,
NAD 83 1990 ADJUSTMENT, FLORIDA EAST ZONE.

PARCEL A



MATCH LINE SHEET 3

SHEET 2 OF 4



SOUTH 1/4 CORNER OF SECTION 19,
TOWNSHIP 41 SOUTH, RANGE 41 EAST
NO MONUMENT FOUND
PUBLISHED COORDINATES
N 927771.592
E 890876.886